

EST 1879



AT A GLANCE



MEETINGS & EVENTS

Beautifully restored and bursting with "wow factor", the Grand Ballroom is once again opening its doors to some of Birmingham's most glamorous occasions.

Our eight additional meeting and event spaces combine period character with the latest technology, while our team of chefs can cater to every need, from business breakfast and working lunch to a four-course feast. If you're looking for a show-stopping event space in a city-centre location, there's nowhere quite like The Grand Hotel Birmingham.

ROOM NAME	THEATRE	CLASSROOM	CABARET	U-SHAPE	BOARDROOM	DINNER	RECEPTION	DIMENSIONS L/W/H/M
GROUND FLOOR								
GRAND BALLROOM	500	176	220	-	-	300	300	28/ 11/ 8.6
HORTON		-		-	-		50	-
FIRST FLOOR								
BALLROOM BALCONY	-	-	-	-	-	40	70	20/3.4/4.4
CATHEDRAL	48	21	16/8	22	20	36	52	8/8/3.5
COLMORE	68	27	24	24	20	40	68	8.2/7/ 4.6
CHURCH	117	33	50	35	30	60	107	10.6/9/ 3.2
REGENT	66	27	28	24	20	40	60	7.6/6.8/4.4
ALBION	-	-	-	-	12	12	-	6.6/3.6/4.4
CHAMBERLAIN	-	-	-	-	12	12	-	6.8/3.6/3.3
TEMPLE	112	48	50	50	44	60	112	15/5.8/4.2
BARWICK	50	27	24	14	14	14	30	8.2/6.2/3.6



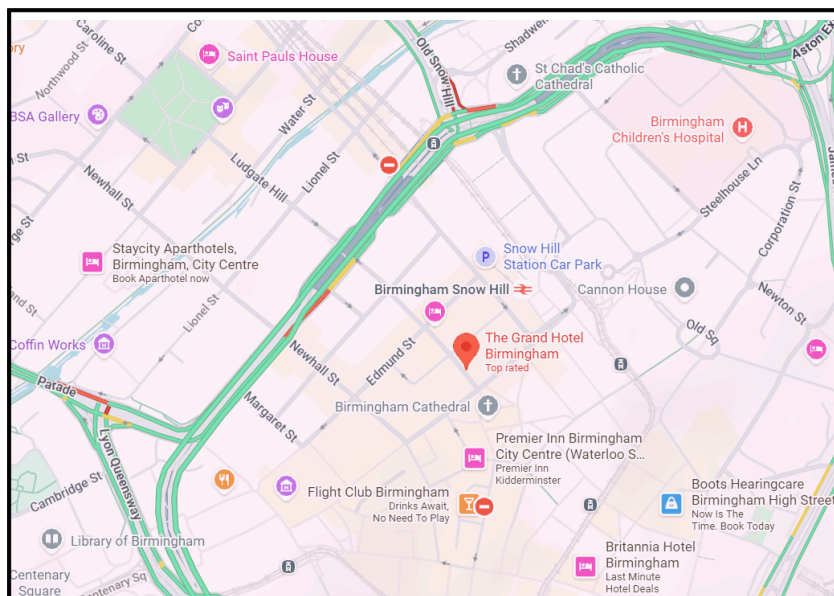
HOW TO FIND US

By Air Birmingham Airport 11 miles

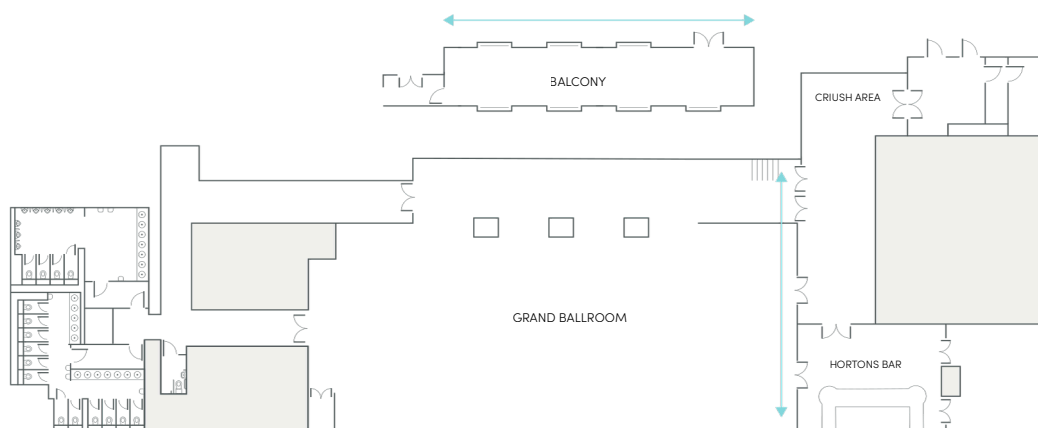
By Rail Birmingham New Street station 0.3 miles (direct trains to/ from London every 20 mins)
Birmingham Snow Hill station 2 minutes

Parking B4 Car park, Weaman Street,
Birmingham, B4 6DG

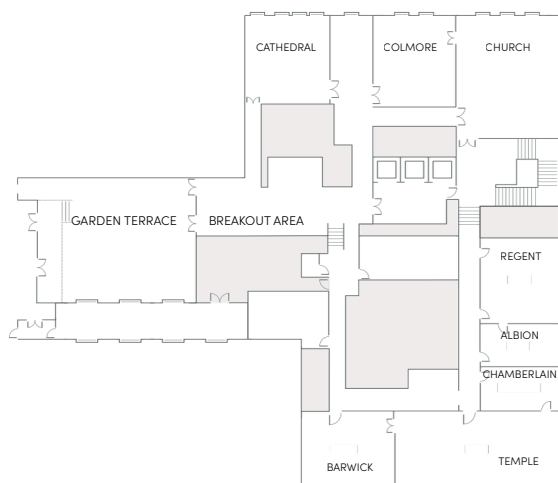
Post Code B3 2FE



GROUND FLOOR



FIRST FLOOR



VIRTUAL TOUR



SIGN UP TO OUR ROCK & ROYALTY REWARDS



IN PARTNERSHIP WITH

